

[How to use the Network streaming]

A) STB(server) to STB(client)

1. You can download latest s/w. (Two STBs)
2. You can check server STB IP address and server STB HDD Mounted name.
 - * STB IP : MENU -> System Settings -> Network Settings -> Local IP
 - * STB HDD Mounted name : MENU -> HDD -> Drive Manager -> check Mounted field
 - * Below that is example picture. (you see Mounted field. [USB-drive])



	Name	Mounted	Type
-1	/dev/sda1	USB-drive	FAT32

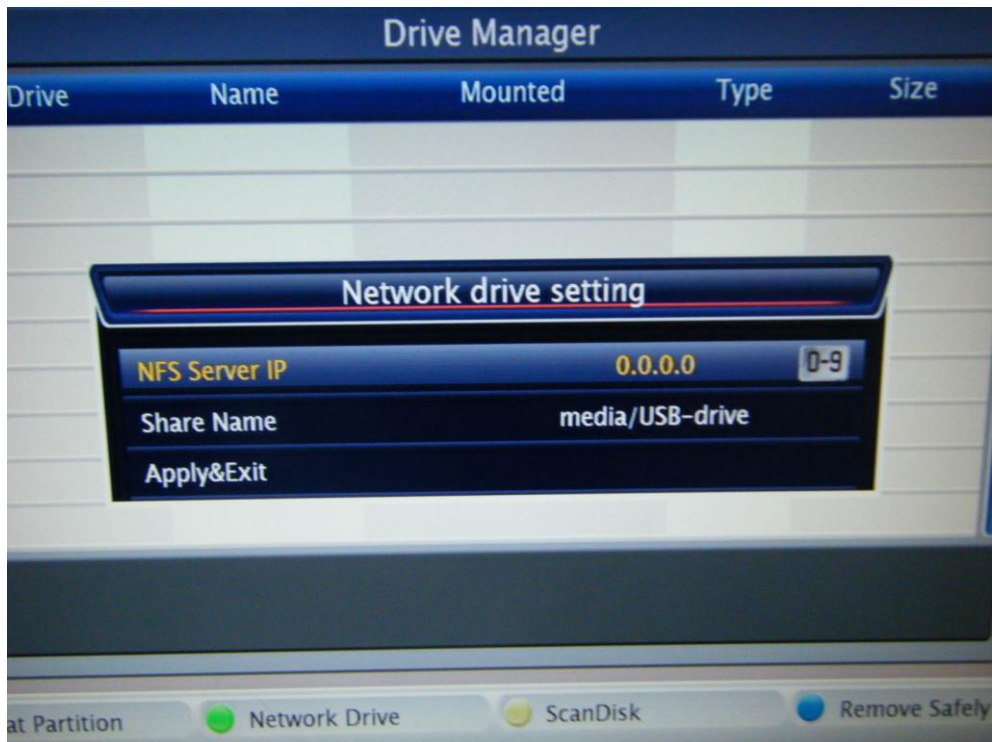
<picture 1>

3. You can power on client STB.
4. Go to Drive Manager menu. (MENU -> HDD -> Drive Manager)
5. Press F2(Green) key on RCU.
6. You can write server STB IP on NFS Server IP field. (You know server IP. #2)
7. You can write server HDD Mounted name on Share Name field. (picture 1)
 - * Below that is example picture.
 - CAUTION :: If you can play STB to STB,

You don't delete "media/".

"media/" is default path name.

Just you can change "USB-drive"



<picture 2>

8. Apply&Exit.
9. Go to File Manager. (MENU -> HDD -> File Manager)
10. Select Network drive.
11. Finish.

A) PC(server) to STB(client)

1. First you can install window nfs server program in your PC. (Hanewin nfs server or Window for UNIX package)

* Below that is setting of hanewin nfs server.

- 1) Go to [Exports] tab on haneWIN.
- 2) Click [Edit exports file] button.
- 3) Delete all and write your share folder name and option.

c:\{share folder} –public –name:{Share Name}

ex) C:\Documents and Settings\win7\My Documents\My Pictures –public –name:test

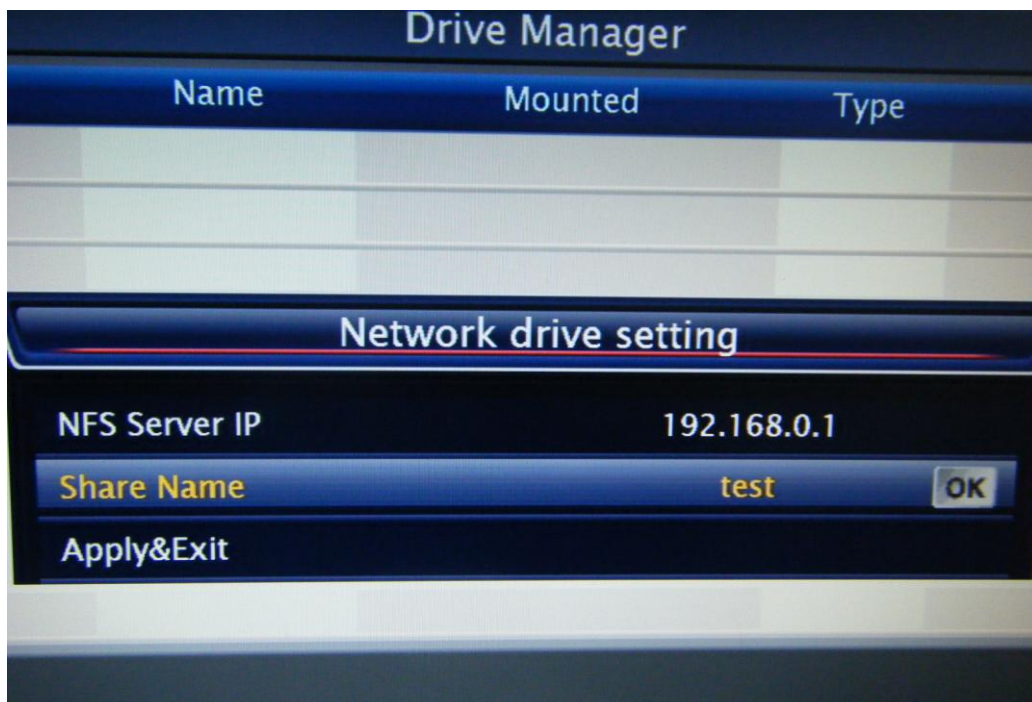
- 4) save and exit
- 5) Click [Restart Server] button.
- 6) If you have FireWall on your PC, you can disable Firewall or add to Exceptions on Window Firewall.

Refer to http://www.networkedmediatank.com/wiki/index.php/Hanewin_NFS_server

2. You can power on client STB.
3. Go to Drive Manager menu. (MENU -> HDD -> Drive Manager)
4. Press F2(Green) key on RCU.
5. You can write NFS Server PC IP on NFS Server IP field.
6. You can write NFS Server PC share name(Share Name) on Share Name field.

* Below that is example picture.

- CAUTION :: If you can play PC to STB,
You can delete all on Share Name field.
Write share name of PC.



7. Apply&Exit.
8. Go to File Manager. (MENU -> HDD -> File Manager)
9. Select Network drive.
10. Finish.